

AUTOMATED CSO SCREEN WASHER

- **Powerful cleaning action**
Removes screenings quickly and efficiently from static screens
- **Non-entry automated system**
No requirement for man entry into CSO.
- **Cleans benching and chamber walls**
Removes fat lines and odourous sewerage derived litter
- **Guaranteed wash after EVERY storm event**
Our engineered systems allow the unit to be run automatically after every storm event
- **Fully submersible**
Can be flooded without the risk of clogging



Versatile and Unique

The SCREENMASTER is used to automate the removal of solids from static CSO screens. Man entry is not required, nor the transport of wash water to the CSO. 4 large bore (>3.5mm) nozzles rotate forwards and backwards whilst the unit indexes 360 degrees. No jet passes above the horizontal plane. Each jet of water is forced against the screen to remove screenings, soil and fat. The SCREENMASTER guarantees that your screens are cleaned immediately after a storm event, with no operator intervention, thus reducing costs, whilst improving screen efficiency, removing odours and prolonging asset life.

SCREENMASTER

CSO SCREEN CLEANING

Technical Specification

MATERIALS OF CONSTRUCTION	316 stainless steel mechanisms, Polypropylene case. Nitrile 'O' rings.
WEIGHT	5kg
INLET	1" BSPP

The SCREENMASTER is self powered by the cleaning medium. From a known pressure, read off from the chart below the flow rate and cleaning radius:

* Average wash time per head is 5 minutes.

NOZZLE CONFIG.	PRESSURE BAR	FLOW LPM	LITRES	CLEANING RADIUS (M)
4 x 3.5mm ²	6	82	410	3
	8	92	460	3
	10	103	520	5
	12	112	560	5

Operation

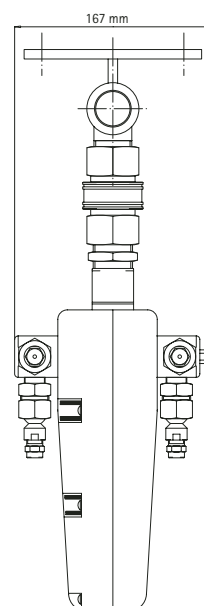
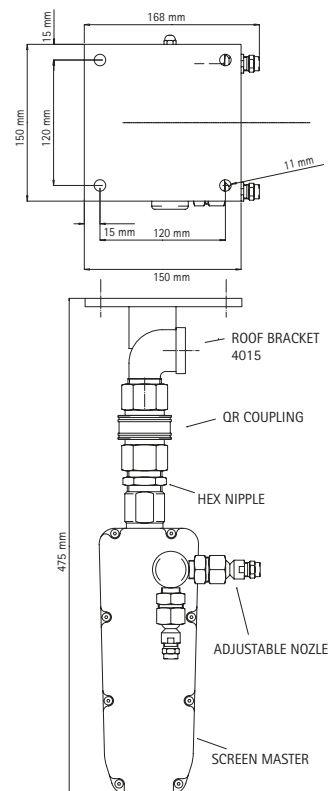
Unique in the industry, the SCREENMASTER utilises high accuracy nozzles to apply wash water directly to the soiled screen surface. The unit progressively indexes as it sweeps the jets over the screen. The height above the screen determines the wash radius. Units can be flooded and are suitable for use with potable water or final effluent. Any size screen can be accommodated.

Mounting

The unit can be mounted by a roof bracket to the soffit, from a wall bracket or within a manhole (200mm) from the surface. Manual units are also available, please refer to our SCREENMOBILE datasheet for more details.

Engineered Systems

BWI have extensive experience in providing the mounting framework and dedicated booster pump sets and controls. Please contact us for a reference list.



For optimal efficiency use a pre-filter or strainer to prevent articulate clogging. We reserve the right to change this datasheet without notice. All data is provided as a guide only. Please contact our head office for detailed specifications.

